



Histofix® Preservative

ready-to use for clinical diagnosis

3.7-4.0% Formaldehyde solution indicated for use as a preservative/fixative in pathological anatomy.

Available in polypropylene bottles of various sizes, with pre-dosed formaldehyde for rapid, convenient use to avoid the need for bothersome preliminary preparations.

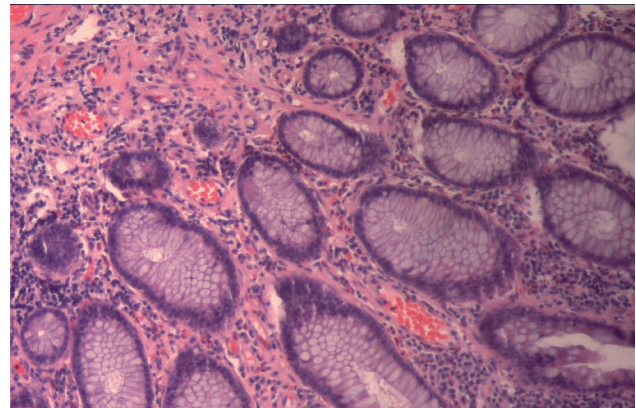
Neutral solution, buffered with sodium phosphate at pH 7 and stabilised with methanol, to prevent potential oxidation phenomena and enhance preservation of the sample to be processed.

Perfect, air-tight seal to ensure high sample stability, plus a grooved base to facilitate handling with gloves and prevent accidental slipping.

What is new

Now available in **pink coloured** formalin for better visualization of small specimens.

Compliance with CE marking requirements for health products used for in vitro diagnostics



Main advantages

- **Convenience:** Transparent bottle containing Histofix® Preservative ready-to-use. The label includes all required information about the product.
- **Safety:** No manipulation is required, eliminating any problems associated with product toxicity. Any spillage is avoided owing to the excellent hermetic design of the containers.
- **Quality:** The high quality and stability of our formaldehyde enables effective and reproducible fixation.
- **A wide-range of formats:** Available in different sizes, thus allowing users to select the most suitable size for their samples.

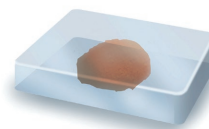
1 Fixation



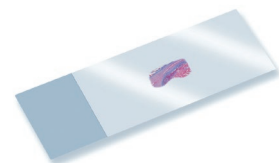
2 Dehydration/
Clearing



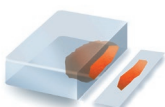
3 Infiltration/
Paraffin Embedding



7 Mounting



4 Sectioning



5 Paraffin Removal/
Hydration



6 Staining



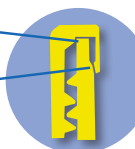


IP-011EN;201610

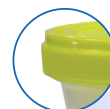


Secondary seal

Primary seal



Double internal security closure
The double-lock safety cap guarantees airtight sealing of the sample.



The bottles have a grooved twist-off cap for easier opening and closing.



The upper part of the container is specially designed to facilitate pouring and prevent dripping on the outside.



The bottles have moulded graduation marks every 10 ml.

Ordering Information

Code	Formol quantity (ml) *	Units / box	Container Information				
			Graduated volume (ml)	Total Volume (ml)	Ø opening (mm)	Height with cap (mm)	Container picture
256462.0905 257462.0905 (pink)	10	45	20	25	34	43	
256462.0955	20	44	40	50	45	43	
252931.0922	30	48	-	60	44	66	
256462.0962 257462.0962 (pink)	30	45	60	76	45	60	
256462.0961	40	45	60	76	45	60	
256462.0967	75	24	120	146	53	78	
256462.0943	125	16	150	250	89	57	
256462.0944	200	12	350	500	90	110	
256462.09149	600	10	-	1200	125	126	
256462.09118	1500	1	-	3100	190	138	
256462.0931	3000	1	-	5300	210	183	

* Each bottle is filled to about half of its capacity.

IP-011EN

AppliChem GmbH
Ottoweg 4
DE-64291 Darmstadt
Germany
Phone +49 6151 9357-0
Fax +49 6151 93 57-11
service@applichem.com

Nova Chimica Srl
Via G. Galilei, 47
I-20092 Cinisello Balsamo
(Milano) Italy
Phone +39 02 66045392
Fax +39 02 66045394
info@novachimica.com

PanReac Química SLU
Garraf, 2
Polígono Pla de la Bruguera
E-08211 Castellar del Vallès
Barcelona (Spain)
Phone +34 937 489 400
Fax +34 937 489 401
central@panreac.com



www.itwreagents.com